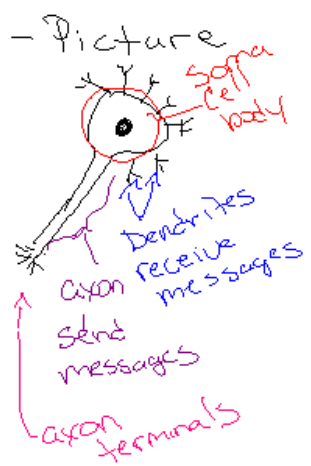


Types of Tissues

Taylor smiles!!

- Nervous**
- Description
 - Communication between Brain + spinal cord and the body
 - Location
 - Brain, spinal cord throughout body
 - Function
 - electrical messages from body to Brain/Spinal cord

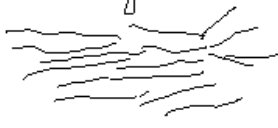


Muscle

- General Description

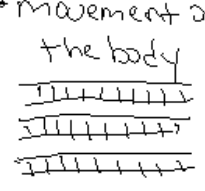
• movement

- Smooth**
- Description
 - involuntary
 - Location
 - Digestive system
 - Circulatory system
 - Function
 - movement w/in the body



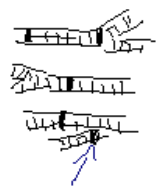
Skeletal (striated)

- Description
 - voluntary
 - attached to bones
- Location
 - attached to bones
- Function
 - movement of the body



Cardiac

- Description
 - Involuntary
- Location
 - In the heart
- Function
 - to move blood around body



Intercalated Disk

Type of Tissue

Epithelial

- General Description
 - Protection/Covering

Transitional

Squamous

Cuboidal

Columnar

Simple (1 layer)

- Description
 - thin layer of cells
- Location (Lining)
 - Lungs, vessels, cavity
- Function
 - allows for transport of materials

Stratified (many layers)

- Description
 - many (thick) layers
- Location
 - skin, esophagus
- Function
 - Protection